

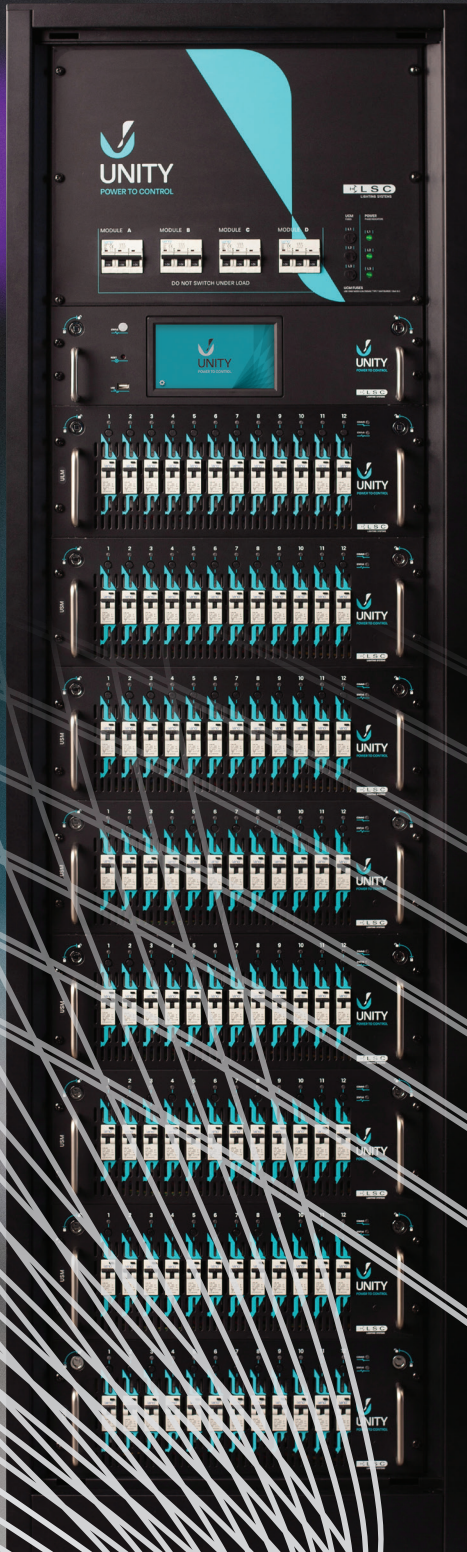
International Product Catalogue

version | 23.2





UNITY
POWER TO CONTROL



Designed for the next generation of lighting and power control





The UCM (UNITY Control Module) has a 18cm capacitive touchscreen and the software offers a comprehensive array of setup options for UNITY configuration. In the event of failure, the UNITY rack will continue to operate independently over DMX without the UCM connected.

Designed for the next generation of lighting and power control, UNITY is a modular hybrid dimming/power cabinet system that combines traditional dimming with the latest technologies of LED control and direct power relays.

UNITY provides the perfect solution for new installations or as an ideal retrofit for outdated systems. With the ability to control any load including LEDs, incandescent, neon and fluorescent fixtures, UNITY also allows the user to set any channel to become a TruPower relay – perfect for powering moving lights, AV equipment, video walls and special FX.

UIR

UNITY Installation Rack

The LSC UIR is a cabinet enclosure available in either a 48-way or 96-way format, prewired to accept any of the three 12-channel output modules – dimmer module (UDM), switching module (USM) and the LED module (ULM). 6-channel output modules are permanently installed in the UIR and cannot be interchanged into other positions.

The UIR provides a medium to high-density installation, each with a UNITY Control Module (UCM) installed (no redundant spare required when using DMX) and provision for up to four (48-way) or eight (96-way) output modules. The unique hinged termination panels permit full access to the wiring area at the rear of the cabinet from the front during installation.

- > Two sizes providing slots for fitting up to four or eight output modules
- > Each slot can accept a UDM, USM or ULM output module
- > Modules plug in with self-aligning connectors that allow for “hot disconnect” – the unit will automatically switch off when removed
- > Multiple low-speed fans for quiet operation
- > Individual 3-phase breaker for each module location
- > Operates with one or more phases present regardless of phase rotation
- > Only front access required for installation and service
- > Corrosion-resistant, powder-coated steel construction
- > Optional steel framed lockable cabinet door with bottom filtered vent and UCM observation window on top half

UCM

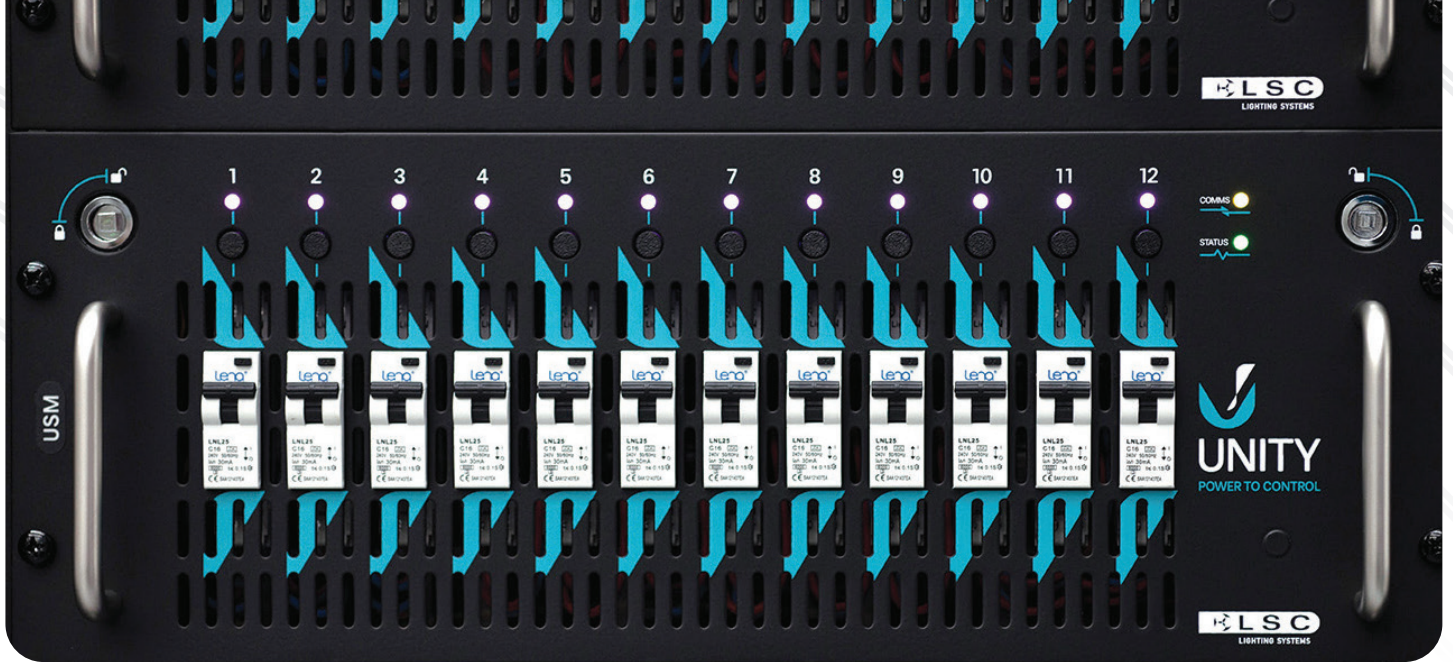
UNITY Control Module

With a large colour touchscreen and simple user interface (similar to most smartphones) the UCM is the heart of the UIR system – designed to configure and control the output modules, display the current system status, report any fault conditions and act as a control and reporting proxy to the outside world.

- > 18cm capacitive multitouch TFT colour display
- > Configurable warning alarms for over-current, over or under-voltage, temperature alarms, tripped breakers, phase loss and control signal loss
- > Real Time display of RMS voltage and currents on all three phases + Neutral in UIR cabinet
- > Configuration and control of all UDM, USM and ULM output modules in the cabinet
- > RDM (Remote Device Management) ability to remotely monitor and control rack cabinet as a whole

All modules fitted with Neutral disconnect MCBs with inbuilt 30mA RCD (RCBO) to provide the highest safety and electrical compliance.





The UDM, USM and ULM rackmount module range features RCBO breakers per channel, quick-release switched Camlocks for module removal and channel LED status indicators.

UDM UNITY Dimmer Module

- > A push-button switch above each breaker on the output modules can be pushed to immediately bring the configuration for that channel onto the UCM's display
- > All relevant information can be reported to a central controller either via RDM or via LSC's Houston-X reporting system
- > UDM, USM and ULM output modules are detected and automatically reconfigured
- > Ability to select control inputs from Art-Net, sACN or dual DMX512-A
- > Softpatch of incoming control signals to all dimmer and switch channels
- > Ability to offer default static outputs in the case of control loss or emergency
- > Ability to save configuration off-site
- > Automatic reconfiguration of replaced modules
- > Software update function via USB to all internal modules ensuring that all modules are running the same software
- > System can be configured so that output modules operate even if the UCM fails

The UDM is a 12-channel x 10/16A or a 6-channel x 25A 4RU dimmer output module incorporating LSC's revolutionary and highly successful GenVI dimmer core. Utilising TruPower and PTFD (Pulse Transformer Fired Dimming) technology, each channel can be configured for direct power control or for dimming traditional fixtures.

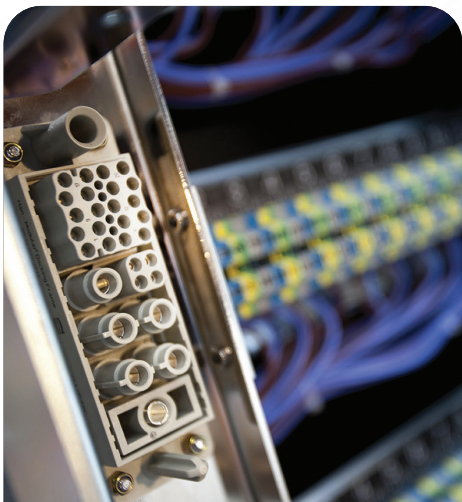
- > TruPower (relay switching that bypasses the dimmer circuitry) directly connects the output circuit to the incoming power via a mechanical relay, an LSC invention
- > PTFD allows control of tricky loads including neon, motors and low-wattage practicals without the need for connecting a dummy load
- > 8-bit or 16-bit DMX controlled dimming, allows for the precise control for dimming LEDs
- > Current Controlled Technology, an LSC-first in controlling the turn-on of high-powered loads to reduce nuisance tripping due to inrush currents

- > High-quality and virtually silent chokes with a Rise Time of 220µS (measured between 10% and 90% at 50% output level into maximum rated load)
- > Load detection per channel
- > Individually wired Neutrals per channel
- > RCBO per channel or optional Neutral Disconnect as required
- > Circuit breaker monitoring – any tripped circuit breaker is reported and indicated by a flashing red LED on the module's front panel
- > All configuration items are stored locally in the dimmer module and each module receives DMX, meaning the system is not dependent on the UCM for operation
- > Individual channel indicator LED on front panel showing mode (dimming or power), tripped circuit breaker, phase fail and channel drive
- > Front panel Camlocks to secure module in place and enable output module to power-up

Wieland industrial designed self-aligning back panel connectors allow for quick connect and disconnect under load conditions.

System configuration is simple and intuitive with the UNITY UCM module.

Custom-designed, high Rise Time inductors are utilised within the ULM and UDM modules.



USM

UNITY Switch Module

The USM is a 12-channel x 10/16A or a 6-channel x 25A 4RU relay only output module for direct power control.

- > Zero-cross switching – ensures that switched power circuits are turned on at the zero-cross point to minimise nuisance tripping when circuits are relay controlled
- > Individual channel indicator LED on front panel showing tripped circuit breaker, phase fail and channel drive
- > Selectable Auto Power Mode – channels can be set to switch on when DMX is applied and off (after a programmable delay of up to 60 minutes) when DMX is no longer present
- > Individually wired Neutrals per channel
- > RCBO per channel or optional Neutral Disconnect as required
- > Circuit breaker monitoring – any tripped circuit breaker is reported and indicated by a flashing red LED on the module's front panel
- > All configuration items are stored locally in the switch module and each module receives DMX, meaning the system is not dependent on the UCM for operation
- > Front panel Camlocks to secure module in place and enable output module to power-up



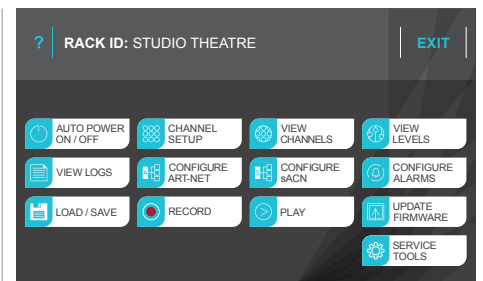
High-efficiency, low noise fans dissipate heat through the top of the cabinets and are auto-speed variable based on internal temperatures.

ULM

UNITY LED Module

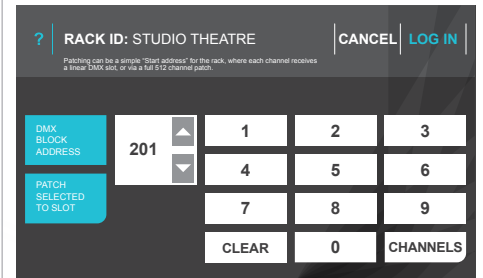
The ULM is a 12-channel x 6A 4RU LED dimmer and relay output module for power control providing all the key features and capabilities of the USM plus more.

- > Unique LED drive technology using dual SCRs
- > Each channel can be software configured to dim either a conventional load or an LED lamp
- > 16-bit DMX controlled dimming, an essential item for dimming LEDs
- > TruPower (relay switching that bypasses the dimmer circuitry) directly connects the output circuit to the incoming power via a mechanical relay, an LSC invention
- > Low-noise, high-quality filtering using toroidal inductors
- > PTFD ensures the control of dimmed outputs is independent of the load being controlled, an LSC invention
- > Current Controlled Technology, an LSC-first in controlling turn-on of high-powered loads to reduce nuisance tripping due to inrush currents
- > Load detection per channel
- > Individually wired Neutrals per channel
- > RCBO per channel or optional Neutral Disconnect as required
- > Circuit breaker monitoring – any tripped circuit breaker is reported and indicated by a flashing red LED on the module's front panel
- > All configuration items are stored locally in the LED module and each module receives DMX, meaning the system is not dependent on the UCM for operation
- > Front panel Camlocks to secure module in place and enable output module to power-up



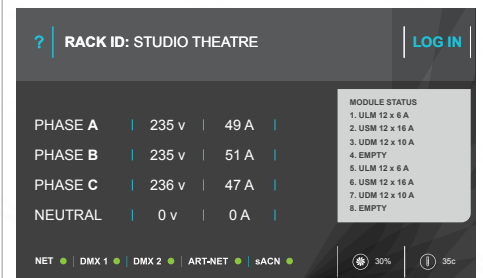
Main Menu

System configuration and set-up menu allowing you the option to set channel information and load/save show settings within the UNITY system.



Patch

Each UNITY rack can be given a simple block DMX Art address or each slot can be patched to a specific DMX address.



Rack Status

The status screen indicates phase voltage and current in Real Time, control input status and any fault conditions within the system.



www.lsccontrol.com
+61 3 9702 8000
info@lsccontrol.com



Open your camera and hover your phone over the QR code to view this product online.
unity.lsccontrol.com.au

Disclaimer
LSC Lighting Systems (Aust) Pty. Ltd. reserves the right to change any product specification without notice. The products listed in this document are trademarks of LSC Lighting Systems (Aust) Pty. Ltd.

Distributed by

UNITY Order codes

Code	Description
Installation Racks	
UIR48	48Ch Unity Installation Rack
UIR96	96Ch Unity Installation Rack
Options	
/RDL	Installation Rack lockable door, left hand opening
/RDR	Installation Rack lockable door, right hand opening
Control Module	
UCM	UNITY Control Module – for system configuration and remote reporting
Output Modules	
UDM12/10	UNITY Dimming/Relay Module 12Ch x 10A – RCBO, TruPower
UDM12/16	UNITY Dimming/Relay Module 12Ch x 16A – RCBO, TruPower
UDM6/25	UNITY Dimming/Relay Module 6Ch x 25A – RCBO, TruPower
ULM12/6	UNITY LED Module 12Ch x 6A – for power, tungsten and LEDs
USM12/10	UNITY Switching Module 12Ch x 10A – RCBO, Relay
USM12/16	UNITY Switching Module 12Ch x 16A – RCBO, Relay
USM6/25	UNITY Switching Module 6Ch x 25A – RCBO, Relay

Advanced Power System

Configurable Power Distribution



The APS delivers a versatile and energy-efficient solution to some of the industry’s most annoying power distribution problems.

Each individual circuit can be sequentially soft-started by a user-programmed delay, eliminating the large inrush and earth leakage currents associated with the sudden start-up of a large array of equipment.

Likewise, multiple APS units can be cascaded so that the next sequenced unit will not start its automatic start-up sequence until the previous unit has finished. As added insurance, the APS can detect “dropped” Neutrals and immediately shutdown all outputs, preventing possible large-scale damage to connected equipment.

Available in 12-channel or 6-channel variants with various output capacities and connector types, the APS is equally at home in a portable 19” rackmount configuration or a handy wallmount chassis for permanent installations.

The APS is ideal for powering moving lights, video screens or audio power amplifiers – in fact any situation where controlled power distribution is needed.



Order Codes

Rackmount Models – 12Ch x 10A

APS12/10A	APS Rackmount Power Distribution 12Ch x 10A – RCBO, 19" 3RU, 12 x 10A 3-pin Australian outputs, 3-phase tail and 32A plug
APS12/10P	APS Rackmount Power Distribution 12Ch x 10A – RCBO, 19" 3RU, 12 x powerCON outputs, 3-phase tail
APS12/10S	APS Rackmount Power Distribution 12Ch x 10A – RCBO, 19" 3RU, 12 x CEE7 outputs, 3-phase tail
APS12/10T	APS Rackmount Power Distribution 12Ch x 10A – RCBO, 19" 3RU, hardwired
APS12/10W	APS Rackmount Power Distribution 12Ch x 10A – RCBO, 19" 3RU, 2 x 16-pin Wieland outputs, 3-phase tail
APS12/10X	APS Rackmount Power Distribution 12Ch x 10A – RCBO, 19" 3RU, 2 x 19-pin Socapex outputs, 3-phase tail

Rackmount Models – 12Ch x 16A (not available for sale in Australia/NZ)

APS12/16P	APS Rackmount Power Distribution 12Ch x 16A – RCBO, 19" 3RU, 12 x powerCON outputs, 3-phase tail
APS12/16S	APS Rackmount Power Distribution 12Ch x 16A – RCBO, 19" 3RU, 12 x CEE7 outputs, 3-phase tail
APS12/16T	APS Rackmount Power Distribution 12Ch x 16A – RCBO, 19" 3RU, hardwired
APS12/16W	APS Rackmount Power Distribution 12Ch x 16A – RCBO, 19" 3RU, 2 x 16-pin Weiland outputs, 3-phase tail
APS12/16X	APS Rackmount Power Distribution 12Ch x 16A – RCBO, 19" 3RU, 2 x 19-pin Socapex outputs, 3-phase tail

Rackmount Models – 6Ch x 25A

APS6/25A	APS Rackmount Power Distribution 6Ch x 25A – RCBO, 19" 3RU, 6 paired 20A/15A 3-pin Australian outputs, 3-phase tail and 40A plug
APS6/25T	APS Rackmount Power Distribution 6Ch x 25A – RCBO, 19" 3RU, hardwired

Wallmount Models – 12Ch x 10A

APW12/10A	APS Wallmount Power Distribution 12Ch x 10A – RCBO, 12 x 10A 3-pin Australian outputs, screw terminal input for mains connection
APW12/10T	APS Wallmount Power Distribution 12Ch x 10A – RCBO, hardwired

Wallmount Models – 6Ch x 25A

APW6/25A	APS Wallmount Power Distribution 6Ch x 25A – RCBO, 6 paired 20A/15A 3-pin Australian outputs, screw terminal input for mains connection
APW6/25T	APS Wallmount Power Distribution 6Ch x 25A – RCBO, hardwired

Options

- > Adaptor brackets for rackmount models to mount in Roobar frames
- > Hanging brackets for wallmount models to mount on Unistrut frames
- > 3-phase tail and plug for wallmount models

Features

- > Staggered start of outputs to reduce main circuit breaker nuisance tripping
- > Cascading start-up for individual units via link cabling and/or based on unit number
- > RCBO per channel with true relay switching – not solid state
- > 3.2" colour graphical LCD touchscreen with intuitive menu control
- > Control and remote monitoring via RDM or Houston-X
- > Control via input and output contact closure (GPI) or DMX512
- > Manual override via front-panel controls
- > Four configurable channel modes – Always On, Always Off, DMX Relay and Standard APS Mode (sequential start-up)
- > Mains zero-cross switching to reduce nuisance tripping of breakers
- > CE (European) and RCM (Australian) approved
- > Two-year warranty
- > Designed and manufactured in Australia by LSC – an Australian-owned company with over 30 years' experience in developing world-first DMX512 products

Technical specifications

- > Model range – 12 circuit with 10A or 16A rated outputs and 6 circuit with 25A rated outputs
- > Control input – DMX512 (1990), DMX512-A (E1-11) and RDM (E1-20) via front-panel 5-pin XLR in and thru connectors
- > Power supply – nominal 110-240V AC, 3-phase star, 50-60Hz with an operating range typically 90-260V AC, 45-65Hz
- > Monitoring of supply input RMS voltage, frequency and RMS current per phase
- > Programmable input supply over-voltage and under-voltage trip levels to protect loads
- > DMX512 control mode allows individual DMX control of each relay channel via a 512-channel Softpatch
- > Automatic power on/off of circuits when a DMX512 signal is detected – signal presence turns outputs on and loss of signal turns outputs off after a preset time delay

Hardware

APS – rackmount power distribution unit

Dimensions: 483mm (w) x 300mm (d) x 132mm (h)

Weight: 16kg

APW – wallmount power distribution unit

Dimensions: 490mm (w) x 270mm (d) x 250mm (h)

Weight: 18kg



Open your camera and hover your phone over the QR code to view this product online.
aps.lsccontrol.com.au



Contact us

LSC Control Systems | www.lsccontrol.com | +61 3 9702 8000 | info@lsccontrol.com

REDBACK Wallmount

A compact, slimline, economic dimmer/ power distribution range – the REDBACK Wallmount provides an unprecedented level of build-quality and features designed to make the user's life easier.

With the ability to be controlled via a DMX console or via wallplates, the REDBACK Wallmount is ideal for venues that need to work with or without a lighting console.

The numerous configuration options ensures that there is a model to suit almost every installation.



redwall.lsccontrol.com.au



Features

- + Each channel is fitted with a mechanical hot-power switch; the user can manually switch any channel(s) to bypass the internal dimming circuitry and be permanently powered with direct 240V supply.
- + Available in 6-channel, 12-channel and 24-channel housings.
- + Factory build options of dimmer or relay only outputs. Kombo racks have a fixed combination of dimmer and relay channels.
- + AutoPower control of relay channels.
- + Capability to store up to six internal scenes that can be replayed via the LCD user interface or by the connection of push-button remote plates.
- + Current Control Technology – designed to prevent cold lamp inrush currents nuisance-tripping the output circuit breakers.
- + Colour LCD with touchscreen providing fast and highly visual access to settings.
- + Internal hard-wired connections for mains input and DMX data.
- + Available in 6-channel, 12-channel and 24-channel housings.
- + Factory build options of dimmer or relay only outputs. Kombo racks have a fixed combination of dimmer and relay channels.
- + Hardwire or Australian Outlet versions.
- + Optional external DMX connectors.



CODE	DESCRIPTION
6 CHANNEL DIMMERS	
RBW6/T	REDBACK Wallmount 6Ch x 10A Dimmer - internal screw terminal outlets, dimmer channel bypass switches.
RBW6/R/T	REDBACK Wallmount 6Ch x 10A Dimmer - internal screw terminal outlets, 3-phase RCD input protection breaker, dimmer channel bypass switches 12 Channel Dimmers.
12 CHANNEL DIMMERS	
RBW12/UK	REDBACK Wallmount 12Ch x 10A Dimmer - 15A UK outlets, dimmer channel bypass switches.
RBW12/G	REDBACK Wallmount 12Ch x 10A Dimmer - dual GST dimmed outlets and one GST HotPower outlet per channel, dimmer channel bypass switches.
RBW12/T	REDBACK Wallmount 12Ch x 10A Dimmer - internal screw terminal outlets, dimmer channel bypass switches.
RBW12/R/UK	REDBACK Wallmount 12Ch x 10A Dimmer - 15A UK outlets and one 3-phase RCD input protection breaker, dimmer channel bypass switches.
RBW12/R/G	REDBACK Wallmount 12Ch x 10A Dimmer - dual GST dimmed outlets and one GST HotPower outlet per channel with one 3-phase RCD input protection breaker, dimmer channel bypass switches.
RBW12/R/T	REDBACK Wallmount 12Ch x 10A Dimmer - internal screw terminal outlets with one 3-phase RCD input protection breaker, dimmer channel bypass switches.
/ND	Neutral disconnect per channel for above models 12 Channel Dimmer/Relay Combo.
12 CHANNEL DIMMER/RELAY COMBO	
RBW12/K/UK	REDBACK Wallmount 6Ch x 10A Dimmer plus 6Ch x 10A DMX controlled Relay Switch - 15A UK outlets, dimmer channel bypass switches.
RBW12/K/T	REDBACK Wallmount 6Ch x 10A Dimmer plus 6Ch x 10A DMX controlled Relay Switch - internal screw terminal outlets, dimmer channel bypass switches.
RBW12/K/R/UK	REDBACK Wallmount 6Ch x 10A Dimmer plus 6Ch x 10A DMX controlled Relay Switch - 15A UK outlets and 3-phase RCD input protection breaker, dimmer channel bypass switches.
RBW12/K/R/T	REDBACK Wallmount 6Ch x 10A Dimmer plus 6Ch x 10A DMX controlled Relay Switch - internal screw terminal outlets and one 3-phase RCD input protection breaker, dimmer channel bypass switches.
12 CHANNEL DMX RELAY	
RBW12/C/UK	REDBACK Wallmount 12Ch x 10A DMX controlled Relay Switch - 15A UK outlets, dimmer channel bypass switches.
RBW12/C/T	REDBACK Wallmount 12Ch x 10A DMX controlled Relay Switch - internal screw terminal outlets, dimmer channel bypass switches.
RBW12/C/R/UK	REDBACK Wallmount 12Ch x 10A DMX controlled Relay Switch - 15A UK outlets and one 3-phase RCD input protection breaker, dimmer channel bypass switches.
RBW12/C/R/T	REDBACK Wallmount 12Ch x 10A DMX controlled Relay Switch - internal screw terminal outlets with one 3-phase RCD input protection breaker, dimmer channel bypass switches.
24 CHANNEL DIMMERS	
RBW24/G	REDBACK Wallmount 24Ch x 10A Dimmer - dual GST dimmed outlets and one GST HotPower outlet per channel, dimmer channel bypass switches.
RBW24/T	REDBACK Wallmount 24Ch x 10A Dimmer - internal screw terminal outlets, dimmer channel bypass switches.
RBW24/R/G	REDBACK Wallmount 24Ch x 10A Dimmer - dual GST dimmed outlets and one GST HotPower outlet per channel and three single-phase RCD input protection breakers, dimmer channel bypass switches.
RBW24/R/T	REDBACK Wallmount 24Ch x 10A Dimmer - internal screw terminal outlets and three single-phase RCD input protection breakers, dimmer channel bypass switches.
24 CHANNEL DIMMER/RELAY COMBO	
RBW24/K/T	REDBACK Wallmount 18Ch x 10A Dimmer plus 6Ch x 10A DMX controlled Relay Switch - internal screw terminal outlets, dimmer channel bypass switches.
RBW24/K/R/T	REDBACK Wallmount 18Ch x 10A Dimmer plus 6Ch x 10A DMX controlled Relay Switch - internal screw terminal outlets and three single-phase RCD input protection breakers, dimmer channel bypass switches.
24 CHANNEL DMX RELAY	
RBW24/C/T	REDBACK Wallmount 24Ch x 10A DMX controlled Relay Switch - internal screw terminal outlets, dimmer channel bypass switches.
RBW24/C/R/T	REDBACK Wallmount 24Ch x 10A DMX controlled Relay Switch - internal screw terminal outlets, three single-phase RCD input protector breakers, dimmer channel bypass switches.



REDBACK Wall Plates



External DMX Plate

RED3

Simple Power Dimming



The RED3 dimmer is the new benchmark for affordable dimming.

It was designed to meet the lighting needs of smaller performance spaces such as schools, exhibitions and places of worship and has been extensively re-engineered so smaller venues can install a superior, quality LSC dimming system at a fraction of the cost.

The RED3 offers 12 channels of 10A dimming outputs fully rated with a 100% duty-cycle, ensuring it can run all day and night without an issue. Current Control Technology is incorporated and prevents cold inrush currents nuisance tripping the output circuit breakers when a large load is suddenly applied.

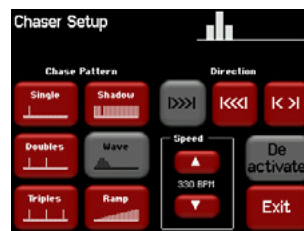
The full-colour touchscreen provides a clear display of all dimmer settings and functionality, including DMX start address, DMX signal loss action, min/max levels, fade curves and visual alarms for phase fail, over temperature and loss of input signal. The internal rigger's control allows the RED3 dimmer to be used as a stand-alone unit without the need of a separate controller – great for trade stands and small events.



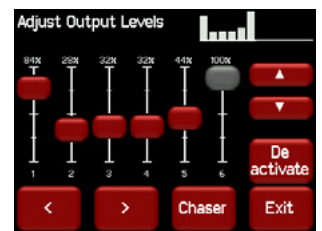
Channel Screen



Home Screen



Chaser Screen



Rigger Screen

Features

- > Graphical user interface via a 2.8" full-colour TFT touchscreen for simple configuration and control of dimmer
- > Full 512 channel Softpatch allows patching of any DMX channel to any number of dimmer channels
- > Functions such as DMX address, fade curves, bottom set and top set of channel levels, rigger's control, backup scenes and stored chases instantly accessible via easily navigable menus
- > 19" 3RU rackmount sturdy chassis ideal for mobile or permanent installations
- > Built to the same exacting standards of all LSC products, no compromise on safety or performance
- > CE (European) and RCM (Australian) approved
- > Two-year warranty
- > Designed and manufactured in Australia by LSC – an Australian-owned company with over 40 years' experience in developing world-first DMX512 products

Technical specifications

- > 12 channels of 10A maximum per channel dimmer output
- > Thermal Magnetic Circuit Breakers (MCB) per output channel for fast-acting short circuit protection
- > DMX512 (1990), DMX512-A (E1-11) with RDM (E1-20) compatibility via front panel mounted 5-pin XLR style connectors
- > 100% duty cycle rated with all channels fully loaded
- > Power supply – nominal 100-240V AC, 3-phase star TN-S with fully rated earth, 50-60Hz
- > Operating range typically 90-260V AC, 45-65Hz auto voltage and frequency adjustment with dropped neutral protection
- > Supplied with 5-core 1.2m H07 rubber 6mm² power cable
- > Choice of output connectors including 3-pin Australian GPO, CEE7, Socapex or Wieland (Harting) multipoles
- > Software updates completed easily via front-panel SD card slot

Order Codes

RED12/10A	RED3 Rackmount Dimmer 12Ch x 10A – RCBO, 19" 3RU, 12 x 3-pin Australian outputs, 3-phase tail and 5-pin plug
RED12/10S	RED3 Rackmount Dimmer 12Ch x 10A – RCBO, 19" 3RU, 12 x CEE7 outputs, 3-phase tail
RED12/10W	RED3 Rackmount Dimmer 12Ch x 10A – RCBO, 19" 3RU, 2 x 16-pin Wieland outputs, 3-phase tail
RED12/10X	RED3 Rackmount Dimmer 12Ch x 10A – RCBO, 19" 3RU, 2 x 19-pin Socapex outputs, 3-phase tail

Option

ROO/BRKT	Adaptor brackets for rackmount models to mount in Roobar frames
-----------------	---

Hardware

3RU x 19" rackmount chassis made from corrosion-resistant, powder-coated steel with rear-screened polycarbonate labels

Mantra Lite **Dimensions:** 483mm (w) x 300mm (d) x 132mm (h)
Weight: 13.5kg



Roobar Bracket

Open your camera and hover your phone over the QR code to view this product online.
red3.lsccontrol.com.au



Contact us

LSC Control Systems | www.lsccontrol.com | +61 3 9702 8000 | info@lsccontrol.com

Disclaimer: LSC Control Systems Pty. Ltd. reserves the right to change any product specification without notice. The products listed in this document are trademarks of LSC Control Systems Pty. Ltd.

RigSwitch+ Performance Power Platform, 48ch 230V, 10A/16A Mains-Fed

Date: _____
Type: _____
Firm: _____
Name: _____
Project: _____

The Vari-Lite RigSwitch+ Performance Power Platform, 12, 24, & 48 Channel Mains-Fed, is a customizable all-in-one power control solution for entertainment lighting installations. RigSwitch+ offers affordable rig power, including relay switching with configurable propagation delay and onboard current monitoring. And thanks to optional 0/1V-10V and DALI dimming modules, it's easy to control house and work light power from the same device.

In addition to the integrated power control, RigSwitch+ also includes space to customize the cabinet by adding a variety of modules to add features and capabilities. Integrators can add interfaces to connect to a variety of Vari-Lite and third-party devices and systems, including DMX, RS232, digital I/O, and more.



- Intelligent relay-based power control - Latching relays designed for lighting loads, with inrush resistance, configurable propagation delay (“sequencing”), and manual override switches. Individually addressable for control, or automatically switch on/off when a DMX/RDM signal is detected.
- Worldwide variants - includes mains-fed options for either CE-certified (220-240V 50Hz with RCBOs per circuit) or UL-certified (100-127V 60Hz or 277V 60Hz) applications.
- Wide range of control inputs available - control your lighting power how and where you need using local UI, DMX/RDM, sACN, LLRP, Art-Net, Vision.Net, OSC, Contact Closure, Web Interface, and REST API.
- Optional 0/1-10V or DALI Dimming Control module- add dimming control of house and work lights.
- Current monitoring per-relay - status reported back over RDM, Vision.Net, local UI, OSC, Web Interface or REST API.
- Optional expansion with prewired Vision.Net modules - optional prewired expansion modules to connect to your wider network using DMX/RDM, RS232, or digital I/O, as well as the opportunity to add timeclock and a web-based On-the-Go lighting control interface.
- Dedicated control interfaces available in Vari-Lite FLX S Series and Neo X Series consoles - control and monitor fixture power directly from the console.
- Built in Dual Gateway function - convert 1 universe of sACN or Art-Net into DMX/RDM, and all Vision.Net messages between RS485 & Ethernet
- Easy to commission - Self-commissionable via local UI, RDM or Web Interface. Also includes core configuration of other Vision.Net modules and button stations straight from the Web Interface.
- RigSync Support in Vari-Lite FLX S Series consoles - use RigSync 2.0 to automatically commission RigSwitch+ along with any connected RDM luminaires, automatically addressing and patching the whole system, and pairing each relay circuit with the associated luminaires.
- Convection cooled, wall-mounted, steel enclosure - easy-to-mount cabinet with standard wiring. Locking door, removable cable knockout plate, removable front-plate and 6x universal D- Series knockouts.



VARI*RITE

Specifications

Due to continuous improvements and innovations, specifications may change without notice.

Electrical

Power Source	Mains Fed
Supply Voltage	120-277VAC
Input Current	
48ch	770A (16A) / 482A (10A)
Plus 4ch Architectural	834A (16A) / 522A (10A)
Output Power	
48ch	176640W (16A)/110400W (10A) Max
Plus 4ch Architectural	191371W (16A)/119612W (10A) Max
Switched Relay Circuits	
48ch	48 x press lock
Plus 4ch Architectural	52 x press lock
Dist Block Mains	4 x 2/0 - 14AWG, 4-14AWG
Neutral/Ground	Buss bar
Terminal Block	12 x 12AWG
Circuit Breakers	48 or 52 x 16A or 10A

Data - Switch Performance 48 (x4)

Power Input	24V DC
Power Consumption	15 W Max
Power Connector	1 x 9 pin Phoenix
DMX/RDM Input	1 x 5 pin Phoenix
Vision.Net	1 x 9 pin Phoenix
Link (to additional units)	1 x 3 pin Phoenix
External Trigger	1 x 3pin Phoenix
Ethernet	1 x RJ45 (10/100Mbps)

Data - Switch 4 Arch [If installed]

Power Input	24V DC
Power Consumption	21W MAX
Power Connector	1 x 9 pin Phoenix
DMX/RDM Input	1 x 5 pin Phoenix
Vision.Net	1 x 9 pin Phoenix
Link (to additional units)	1 x 3 pin Phoenix
10V / DALI Output	4 x dual press down connectors
Dali Load Rating/channel	130mA

Installation

Mounting	Wall Mount
Mounting Holes 48ch	4 x Ø8.0, 406.4 (16") x 1330 (52.36")
Knockouts	5 X Ø49.6 (1.5"), 5 X Ø34.6 (1")
External Data Cutouts	6 x Neutrik D-Series

Certification and Safety

Ingress protection rating	IP 20
Approbations	cETLus, CE, UKCA
Conformity	UL\CSA\ETL60730, UL924

Physical

Construction	Galvanized G90 Steel
Housing Color	Black
Dimensions (H x W x D)	1401.6 x 652.9 x 125 mm (55.2 x 25.7 x 4.9 in)
Weight	52.2 kg (115lb)
Operating Temperature	0 - 40°C (32 - 104°F)
Cooling System	Convection
Humidity	5-90% non-condensing

Connectivity

Protocols	DMX512
	RDM
	Vision.Net
	sACN
	LLRP
	Art-Net
	OSC
	HTTP

Product and Accessories

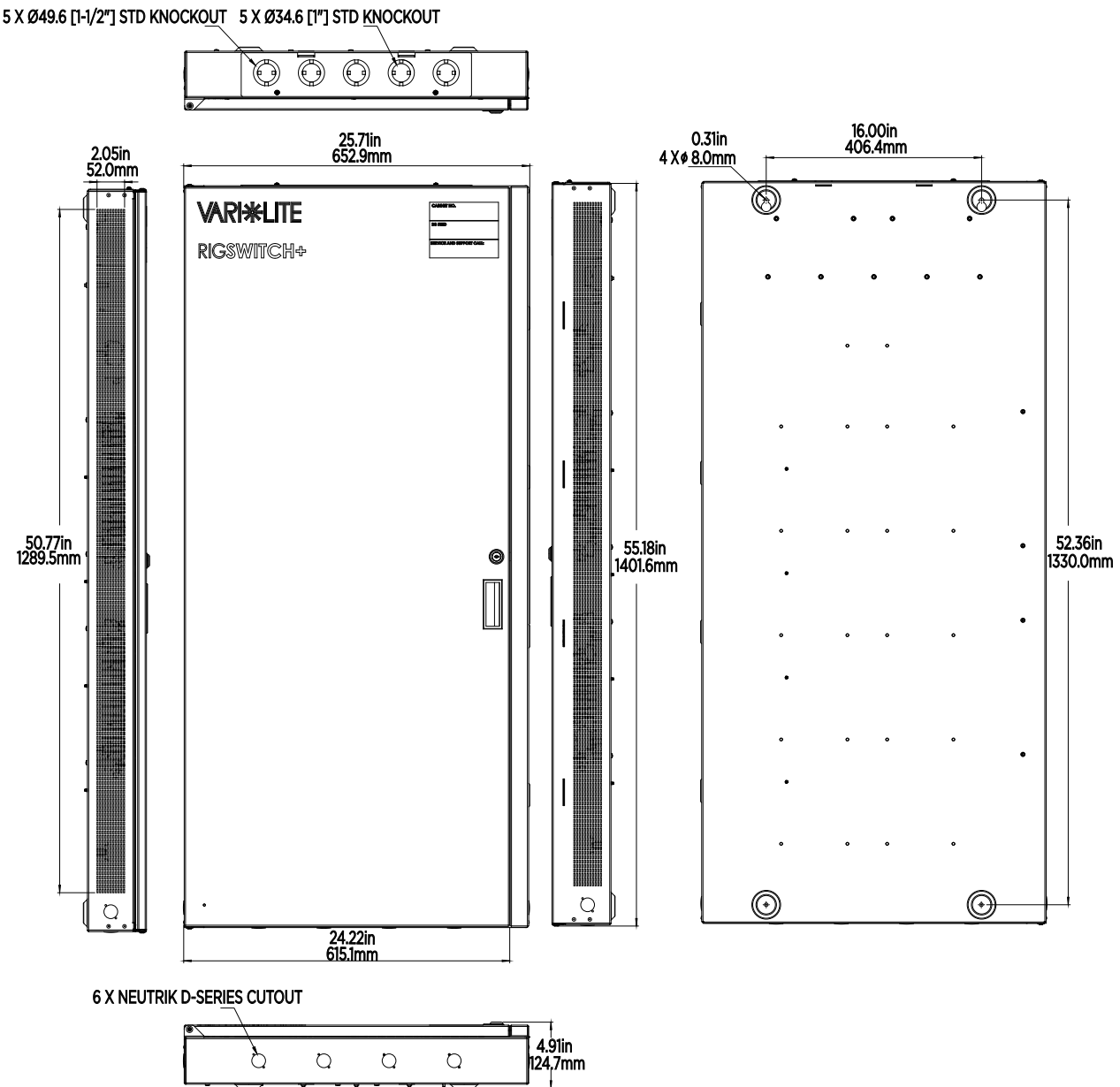
Product Name	Order Code
48ch RigSwitch+ Performance (230, 16A, mains-fed) ¹	53818-248
48ch RigSwitch+ Performance, plus 4ch Architectural (230V, 16A, mains-fed) ²	53818-252
48ch RigSwitch+ Performance (230V, 10A, mains-fed) ¹	53818-348
48ch RigSwitch+ Performance, plus 4ch Architectural (230V, 10A, mains-fed) ²	53818-352

¹ - 4 optional VN modules

² - 2 optional VN modules

Accessories/Spare Parts	Order Code
Switch UI	53818-600
Switch 4 Architectural	53818-704
Switch 12 Performance	53818-812

Dimensions



Configurable Products

This product is available to order with 1 or more additional DIN Modules. To order, add the corresponding number to the aaa-bbb-ccc-ddd at the end of the order code. Please note, not all modules are available in every cabinet. Please utilize the [configuration tool](#) or contact a representative at entertainment.service@signify.com

48ch RigSwitch+ Performance (230V, 16A, mains-fed) with:	53818-248-aaa-bbb-ccc-ddd
48ch RigSwitch+ Performance, plus 4ch Architectural (230V, 16A, mains-fed) with:	53818-252-aaa-bbb
48ch RigSwitch+ Performance (230V, 10A, mains-fed) with:	53818-348-aaa-bbb-ccc-ddd
48ch RigSwitich+ Performance, plus 4ch Architectural (230V, 10A, mains-fed) with:	53818-352-aaa-bbb

aaa-bbb-ccc-ddd	Module	Notes	Max Power
000	None		0W
710	Vision.Net Gateway - 65710		60W
004	Vision.Net Module - Data Splitter (4 way) - 53904-004		96W
108	Vision.Net Module - Digital Input (8 port) - 53904-108		0.48W
304	Vision.Net Module - Digital I/O (4 port) - 53904-304		0.48W
401	Vision.Net Module - DMX512 (1 Universe) - 53904-401	two spaces, bbb must = 000	0.48W
501	Vision.Net Module - RS232 and USB - 53904-501		0.48W
601	Vision.Net Module - Sensor Interface - 53904-601		0.48W
161	Networking Node - 3-Port-Din Rail - 65161-RW		4W
600	DMX512A(RDM) 6 ports splitter, wall mount - RDM6WALL	two spaces, bbb must = 000	4.5W
301	Vision.Net Power Supply - 24V, 150W - 53906-301		

