



# FLEXRAIL

—  
OUR VERSATILE  
CURTAIN TRACK



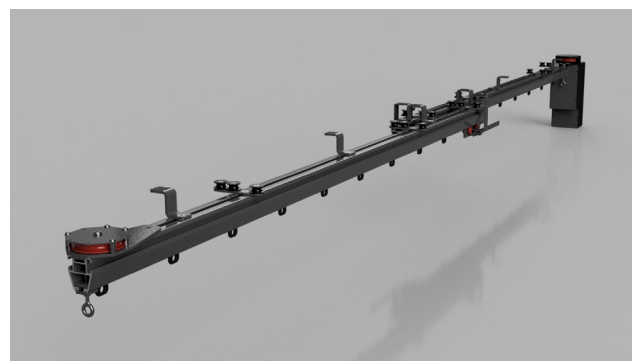
# FlexRail

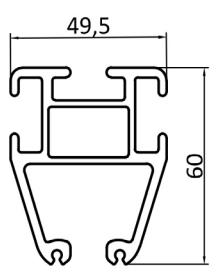
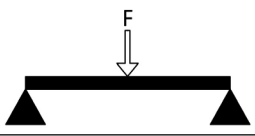
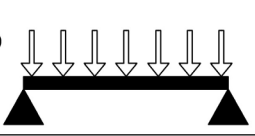
FlexRail is developed in Sweden and designed to meet every need of the event industry. With a flexible and strong construction, FlexRail saves time on installations and lasts year after year. Many accessories fit both rope and motor driven operation. This allows you to quickly deliver the solution your customer needs with a minimal warehouse cost. All components are of high quality materials and with a powder coated or anodized surface finish. The system is well tested in our own facilities as well as externally.



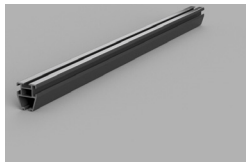
- Aluminium profile W: 49,5mm x H: 60mm
- Self-weight 1,95kg/m + accessories
- Matte black anodized
- Walk-along, cord or motor operation
- Material: EN AW 6063 - T6
- Calculated according to EuroCode 9
- Available standard curves up to 900mm radius
- Available in special shapes and configurations
- Black, white, silver as standard, custom color on request

- Motor integrated to the rail with cord tensioner
- Powerful motor with a continuous output of 300W (900W peak)
- Integrated drive electronics with 4096 PPR encoder
- External limit switches for full open & closed
- One extra programmable stop position through the encoder
- Powercon input 1x230V 50hz
- Connector for control unit (or external control e.g. DMX/Crestron)
- Variable speed up to 400mm/s
- Different speeds optional
- Additional stop positions optional

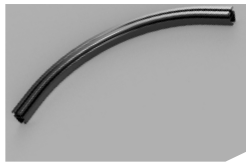


	LOADTABLE (5MM DEFLECTION)		
	LENGHT [M]	CENTRE POINT LOAD [KG]	UNIFORMLY DISTRIBUTED LOAD [KG]
			
	1.0 M	425 KG	685 KG
	2.0 M	50 KG	85 KG
	3.0 M	15 KG	25 KG

Warning! All other load-bearing components need to be checked for suitability of the application



**FlexRail Straight Profiles**  
500-2811  
00 - 4000mm, black anodized  
04 - 5000mm, black anodized  
  
White (-W), Silver (-S) & Custom colour (-C)



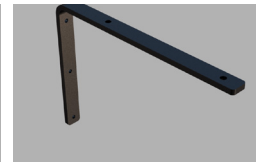
**FlexRail Curved Profiles**  
500-2811  
01 - 90° R:500mm, black anodized  
02 - 90° R:700mm, black anodized  
03 - 90° R:900mm, black



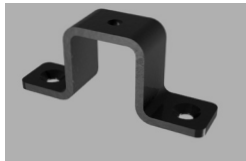
**FlexRail Ceiling & Spacer Mounting Plate\***  
500-2812  
00 - powder coated black  
  
White (-W), Silver (-S) & Custom colour (-C)



**FlexRail Wall Bracket Single Rail\***  
500-2812  
01 - 8mm, powder coated black  
  
White (-W), Silver (-S) & Custom colour (-C)



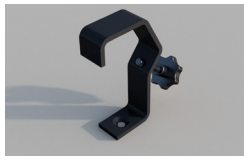
**FlexRail Wall Bracket Double Rail\***  
500-2812  
02 - 8mm, powder coated black  
  
White (-W), Silver (-S) & Custom colour (-C)



**FlexRail Ceiling Bracket Single & Double Rail\***  
500-2812  
03 - powder coated black  
  
White (-W), Silver (-S) & Custom colour (-C)



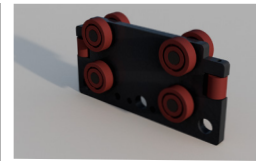
**FlexRail Ceiling Bracket Offset Single Rail\***  
500-2812  
04 - powder coated black  
  
White (-W), Silver (-S) & Custom colour (-C)



**FlexRail Hook Clamp 48-51mm\***  
500-2812  
05 - powder coated black  
  
White (-W), Silver (-S) & Custom colour (-C)



**FlexRail 2-Wheel Nylon Runner with Support**  
500-2813  
00 - black/red  
  
White/Red (-WR), Silver/Red (-SR) & Custom/Red (-CR)



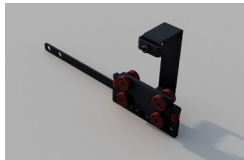
**FlexRail Master Runner Walk-Along**  
500-2813  
02 - black/red  
  
White/Red (-WR), Silver/Red (-SR) & Custom/Red (-CR)



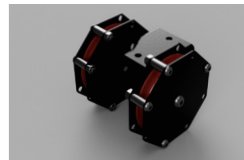
**FlexRail Master Runner Walk-Along & Overlap Arm**  
500-2813  
03 - black/red  
  
White/Red (-WR), Silver/Red (-SR) & Custom/Red (-CR)



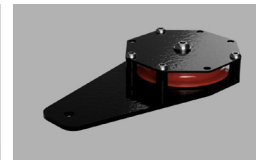
**FlexRail Master Runner Rope & Motor Operation**  
500-2813  
06 - black/red  
  
White/Red (-WR), Silver/Red (-SR) & Custom/Red (-CR)



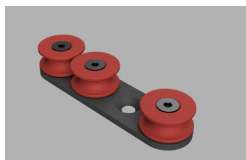
**FlexRail Master Runner with Overlap Arm**  
500-2813  
07 - black/red  
  
White/Red (-WR), Silver/Red (-SR) & Custom/Red (-CR)



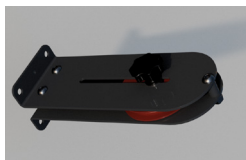
**FlexRail Head Pulley\***  
500-2814  
01 - black/red  
  
White/Red (-WR), Silver/Red (-SR) & Custom/Red (-CR)



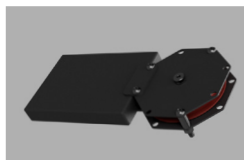
**FlexRail Return Pulley\***  
500-2814  
02 - black/red  
  
White/Red (-WR), Silver/Red (-SR) & Custom/Red (-CR)



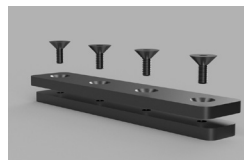
**FlexRail Top Guide\***  
500-2814  
03 - 3 wheels, black/red  
04 - 4 wheels, black/red  
  
White/Red (-WR), Silver/Red (-SR) & Custom/Red (-CR)



**FlexRail Tensioner Pulley**  
500-2815  
02 - floor mounted, black/red  
  
White/Red (-WR), Silver/Red (-SR) & Custom/Red (-CR)



**FlexRail Tensioner Pulley**  
500-2815  
01 - hanging weight, black/red  
10 - cord 8mm, rope operated, black  
  
White/Red (-WR), Silver/Red (-SR) & Custom/Red (-CR)



**FlexRail Standard Joint Connector with Pins\***  
500-2816  
00 - black  
  
White (-W), Silver (-S) & Custom colour (-C)



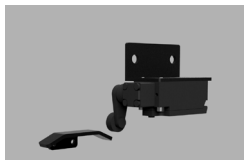
**FlexRail Endstop**  
500-2816  
01 - black  
  
White (-W), Silver (-S) & Custom colour (-C)



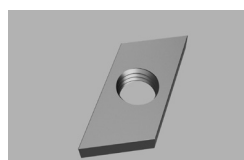
**FlexRail Motor Unit FR-200\***  
500-2817  
00 - 1x230V, programmable, black  
03 - cord 5mm, aramid, motor operation, black



**FlexRail Control Unit FRC-200**  
500-2817  
05 - black  
  
White (-W), Silver (-S) & Custom colour (-C)



**FlexRail Limit Switch with Bracket & Runnerplate\***  
500-2817  
10 - black  
  
White (-W), Silver (-S) & Custom colour (-C)



**FlexRail Sliding Slot Nut**  
500-2818  
01 - M8



**FlexRail Sliding T-head Bolt**  
500-2818  
02 - M8x20mm  
03 - M8x30mm  
04 - M8x50mm

(\* = Sliding Slot Nut and T-head Bolt included)

SALES OFFICE & WORKSHOP  
MALMGATAN 18  
SE-602 23 NORRKÖPING  
+46 10 211 50 50

SALES OFFICE  
SKVADRONSGATAN 6A  
SE-217 52 MALMÖ  
+46 72 164 00 22

## PROFESSIONAL STAGE ENGINEERING



[www.psrig.com](http://www.psrig.com)



[info@psrig.com](mailto:info@psrig.com)



[/psrigswe](https://www.facebook.com/psrigswe)



[/company/psrig](https://www.linkedin.com/company/psrig)



# PSRIG

# Hall Stage

PURVEYORS OF INNOVATIVE ENGINEERING SINCE 1898

## T60 TRACK



THE ORIGINAL T60  
CURTAIN TRACK  
FROM HALL STAGE



With thousands of miles of operational systems installed all over the world, T60 Track is a standard-setting product range with a proven record.



Delivering great value, with reliable and dependable performance every time, T60 track is designed to meet the exact requirements of any stage.



Built with the entertainment industry in mind, T60 can be supplied from stock or custom-made to fit your stage...wherever it is.

Hall Stage Ltd, Unit 4 Cosgrove Way  
Luton, Bedfordshire, LU1 1XL  
sales@hallstage.com

Tel: + 44 (0)1582 439440  
Fax: + 44 (0)1582 720904  
UK Low Rate Call: 0845 345 4255

www.hallstage.com

## T60 TRACK

### APPLICATION

Medium duty track used in a wide range of stage and studio applications.

### CAPACITY

- Wheeled runners 4kg capacity, one runner per 300mm of curtain length recommended.
- Optional ball raced runners 6kg capacity.
- All T60 track systems and components have been load and destruction tested and function perfectly with a 50kg-imposed load, with only 2mm distortion over a 1.5m unsupported span.

### TRACK FORMS/CONFIGURATIONS

- Wide range of configurations:
- Straight Lengths 250mm - 3000mm
- Curved: sections from 0.5m radius.

### FINISH

Black epoxy powder coat finish minimizing reflection. Other colours and finishes available on request.



T60 Switch Point

Please refer to the current price list or track pricer for COMPLETE TRACK KITS and all available components.

Full specifications of the T60 track range and other fine stage and theatre products may be obtained from our web site as downloadable product data sheets

For more information visit: [www.hallstage.com](http://www.hallstage.com) or enquire via e-mail: [sales@hallstage.com](mailto:sales@hallstage.com)

In line with a programme of continued product development and improvement. Hall Stage Limited reserve the right to vary the specification, design or construction of any products/equipment described or offered for sale, or to withdraw or replace products/equipment without prior notification or public announcement.

### OPERATION

Walk along, hand line, hand winch or with dynaglide curtain controller. Rearfold system options for hand or electric traverse systems.

### FIXING OPTIONS

A wide range of fixing kits are available to support track from suitable structures. One fixing every 1.5mtrs is recommended. The descriptions below are for standard fixing options. For further alternatives please contact us with your requirements.

- Universal clamp, used to support track from wooden joist, provides track attachment to other fixings via M10 stud.
- Face Fixing Bracket to fix track to adjacent wall or proscenium opening.
- Girder Fixing Clip to suspend track from steel girder widths between 75mm and 150mm.
- Tube Fixing Clip to suspend track from horizontal pipe of 38mm, 48mm or 60mm diameter.
- Deadline Suspension Hanger to suspend track directly from a suitable support via 4mm cable.
- Barrel Fixing Clip to suspend single track lengths directly below and parallel to barrel with 38mm, 48mm or 60mm diameter.
- "Z" Brackets to suspend overlapped tracks directly below and parallel to barrel with 38mm, 48mm or 60mm diameter.

### ADVANCED FEATURES

The T60 Track can be custom built to suit your specific requirements.

- Scenery Carriers can be used to move significant loads on all Hall Stage tracking systems.
- Swivel Arm Carriers can be used to move and swivel curtain legs.
- Beam Track. T60 Track can be strengthened and flown with a motor unit by adding a beam to the spine.
- Switch Points are used to transfer curtains between tracks and are available in manual (remote or local control) or electric operation in a variety of track configurations.
- Diversions: All operating systems can be diverted using pulley systems to allow the control of your track to be positioned as required.

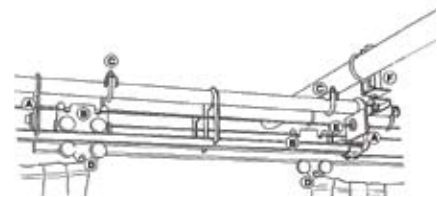


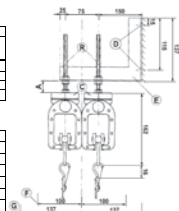
Figure 1 Key

A	Line Guides	G1193
B	Wheeled Runner/ Slider master straight track	G3750
C	Overlap Clips	G3291
D	Tubepack	G3278
E	Stop Brackets	G2751
F	Tube Fixing Clip 48mm	G3136

Figure 2 Key

A	Clearance of adjustment between 18mm - 100mm
B	Stud Bolts 10mm dia in 150mm and 300mm lengths
C	Universal Fitting
D	10mm dia bolt holes
E	Face Fixing Bracket, 150mm reach (inner track)
F	Recommended clearance for track
G	Recommended clearance for curtains

All dimensions in mm



# Hall Stage

PURVEYORS OF INNOVATIVE ENGINEERING SINCE 1898

# T70 TRACK



## HEAVY DUTY T70 TRACK

Hall Stage Ltd, Unit 4 Cosgrove Way  
Luton, Bedfordshire, LU1 1XL  
sales@hallstage.com

Tel: + 44 (0)1582 439440  
Fax: + 44 (0)1582 720904  
UK Low Rate Call: 0845 345 4255

www.hallstage.com

T70 Track is the heavy-duty system of choice for all long drape sets for stages and studios worldwide.

With a solid reputation for reliability and dependability, T70 provides high load capacity making it the ideal track for heavyweight curtains, cycloramas and installations with extreme spans.

For single or overlapped operation, straight and curved sections enable the construction of a vast variety of configurations - with fixing kits to suit any application.



# Hall Stage

PURVEYORS OF INNOVATIVE ENGINEERING SINCE 1898

## T70 TRACK

### APPLICATION

Heavy duty track used in a wide range of applications including theatres, opera houses, proscenium tracks, cyclorama tracks, TV studios and schools. Tracks can also be used for hanging on counterweight sets and powered bars.

### CAPACITY

- Wheeled runners 7kg capacity, one runner per 300mm of curtain length recommended
- Optional ball raced runners 9kg capacity
- Scenery carriers to 45kg capacity

### TRACK FORMS/CONFIGURATIONS

- Vast range of configurations
- Straight Lengths 500mm – 3000mm
- Curved sections available from 1mtr radius

### FINISH

Black epoxy powder coat finish minimizing reflection. Other colours and finishes available on request



T70 Drop Out

Please refer to the current price list or track pricer for COMPLETE TRACK KITS and all available components.

Full specifications of the T70 track range and other fine stage and theatre products may be obtained from our web site as downloadable product sheets.

For more information visit: [www.hallstage.com](http://www.hallstage.com) or enquire via e-mail: [sales@hallstage.com](mailto:sales@hallstage.com)

In line with a programme of continued product development and improvement, Hall Stage Limited reserve the right to vary the specification, design or construction of any products / equipment described or offered for sale, or to withdraw or replace products / equipment without prior notification or public announcement.



### OPERATION

Walk along, hand line, hand winch or with a dynaglide curtain controller. Rearfold system options for hand or electric traverse systems.

### FIXING OPTIONS

A wide range of fixing kits are available to support track from suitable structures. One fixing every 2mtrs is recommended. The descriptions below are for standard fixing options. For further alternatives please contact us with your requirements.

- Universal clamp, used to support track from wooden joist, provides track attachment to other fixings via M12 stud
- Face Fixing Bracket to fix track to adjacent wall or proscenium opening.
- Girder Fixing Clip to suspend track from steel girder widths between 75mm and 150mm.
- Tube Fixing Clip to suspend track from horizontal pipe of 38mm, 48mm or 60mm diameter.
- Deadline Suspension Hanger to suspend track directly from a suitable support via 4mm cable.
- Barrel Fixing Clip to suspend single track lengths directly below and parallel to barrel with 38mm, 48mm and 60mm diameter.
- 'Z' Brackets to suspend overlapped tracks directly below and parallel to barrel with 38mm, 48mm and 60mm diameter.

### ADVANCED FEATURES

The T70 Track can be custom built to suit your specific requirements.

- Scenery Carriers can be used to move significant loads on all Hall Stage tracking systems.
- Swivel Arm Carriers can be used to move and swivel curtain legs.
- Beam Track. T70 Track can be strengthened and flown with a motor unit by adding a beam to the spine.
- Switch Points are used to transfer curtains between tracks and are available in manual (remote or local control) or electric operation in a variety of track configurations.
- Diversions: All operating systems can be diverted using pulley systems to allow the control of your track to be positioned as required.



# Hall Stage

PURVEYORS OF INNOVATIVE ENGINEERING SINCE 1898

## T250/T300



**T300 ELECTRIC  
CURTAIN TRACK  
SYSTEM**

**T250 WALK ALONG  
AND HAND LINE  
CURTAIN TRACK  
SYSTEM**

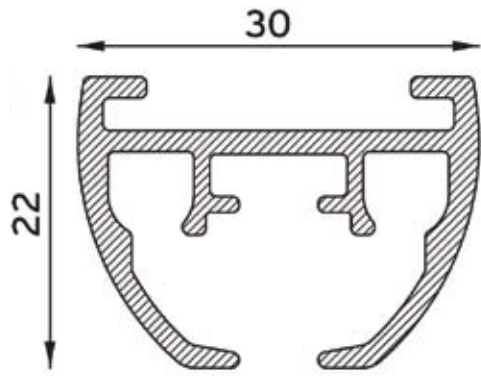


Hall Stage Ltd, Unit 4 Cosgrove Way  
Luton, Bedfordshire, LU1 1XL  
sales@hallstage.com

Tel: + 44 (0)1582 439440  
Fax: + 44 (0)1582 720904  
UK Low Rate Call: 0845 345 4255

www.hallstage.com

# T250TRACK



Hall Stage T250 Track is a walk along or hand line operated curtain system suitable for light or medium weight curtains. Designed for mid-sized applications, T250 can be curved and bent to a minimum radius of 250mm. The elegant rounded profile remains unobtrusive when installed with its proprietary fixing clamps. Control side and cord drops can be altered on site with relative ease making the T250 elegant and uniquely versatile.

## MATERIALS

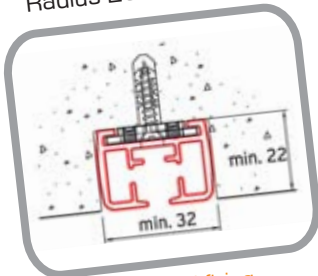
Aluminium 606035-T6-F22 (higher specification than DIN 1725). Shape and size tolerances are in accordance with DIN 17615. White RAL 9010 as standard. Profile weight T300 567 gr per linear metre and T250 492 gr per linear metre.

## INSTALLATION

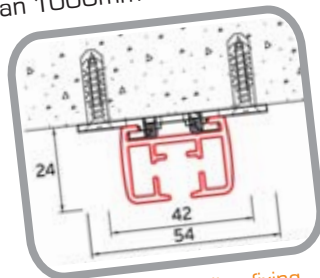
1. Standard ceiling fixing bracket 6050, fixing centres required every 600mm - 800mm. Maximum total curtain weight with standard ceiling brackets: 25kg.
2. Heavy duty ceiling fix bracket 6055-1000 should be used for heavier curtains up to 100kg and for special curves. Fixing centres required every 600mm - 800mm.
3. Standard wall fixing bracket 6051 (projection of 40mm)
4. Extendable wall fixing bracket 6057 (projection of 70mm - 150mm). Weight per bracket of up to maximum 10kg, depending on fixing surface.

## BENDING

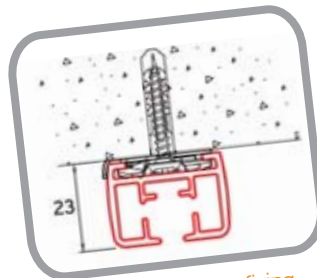
Radius 250mm or greater than 1000mm.



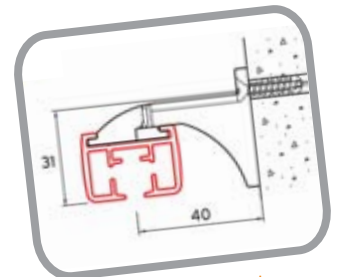
Recessed fixing



Heavy duty ceiling fixing



Standard ceiling fixing



Standard wall fixing

T300 is a powerful low voltage (24V) electrically operated curtain track system. Supplied tested and assembled and completely ready to install with infrared remote control as standard. The track is suitable for both 110 and 240 Volt supply, T300 can be installed without the need of an electrician. T300 track can also be supplied curved to meet any configuration you may require.

## SPECIAL QUALITIES

- Silent operation
- Strong Motor with low system resistance
- Easy control and setting of the system using infrared remote control
- In-built repeat timer function
- Up to 5 intermediate positions programmable
- Standard travel speed set at 150mm / second
- Integrated T300 'CAN-BUS' system, allows group / individual control of T300 electric curtain tracks
- Optional Pilot Release System, allows curtains to be operated by hand in the event of emergency, power failure and/or product unfamiliarity

# T300TRACK

